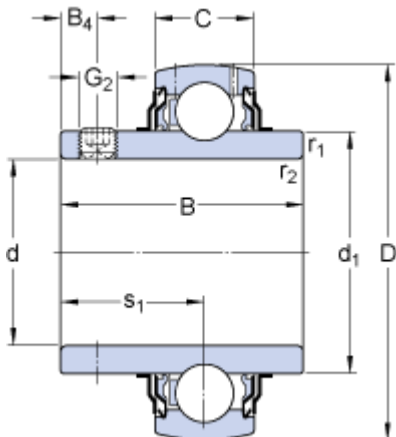


# YAR 212-207-2F

## Dimensions



d	61.913	mm
D	110	mm
B	65.1	mm
C	26	mm
d <sub>1</sub>	≈ 75.64	mm
B <sub>4</sub>	10	mm
r <sub>1,2</sub>	min. 1.5	mm
s <sub>1</sub>	39.7	mm

## Calculation data

Basic dynamic load rating	C	52.7	kN
Basic static load rating	C <sub>0</sub>	36	kN
Fatigue load limit	P <sub>u</sub>	1.53	kN
Limiting speed <sup>1)</sup>		3400	r/min
Calculation factor	f <sub>0</sub>	14	

## Mass

Mass complete bearing		1.3	kg
-----------------------	--	-----	----

## Mounting information

Thread grub screw	G <sub>2</sub>	3/8-24 UNF	
Hexagonal key size for grub screw	N	4.763	mm
Recommended tightening torque for grub screw		16.5	N·m